

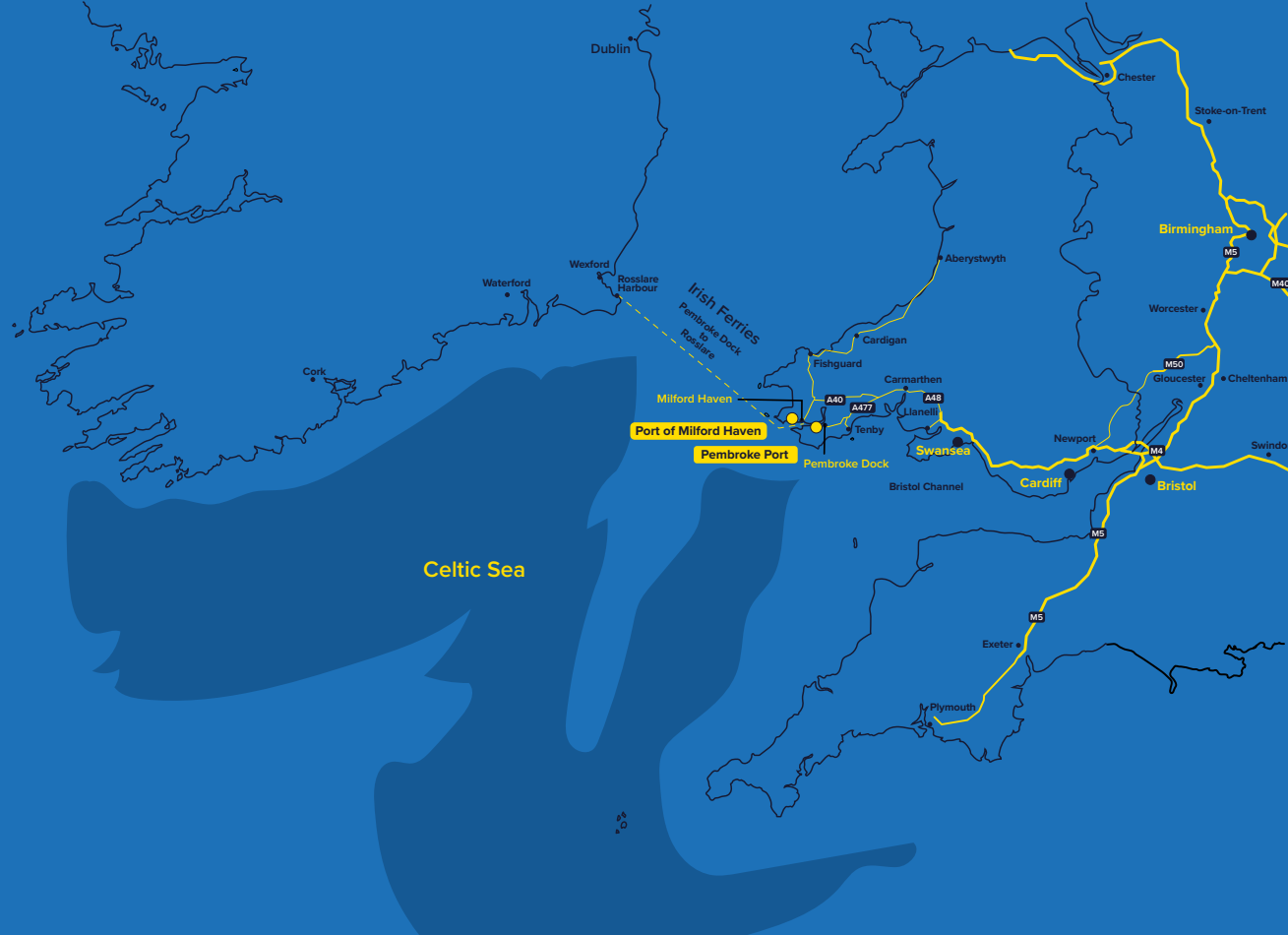
Part of the Port of Milford Haven

Welcome to Pembroke Port

Pembroke Port is a 69 acre port on the west coast of the UK, perfectly located on the sheltered waters of the Milford Haven Waterway, near the Irish Sea and Bristol Channel.

Operating on a 24 hour basis, the Port provides multiple quayside services to the marine, engineering and renewables sector and has an established reputation in cargo handling, heavy lifts, and both passenger and freight ferry operations.

Pembroke Port is owned and operated by the Port of Milford Haven, a Trust Port, which is responsible for pilotage and conservancy on the Milford Haven Waterway.



Historic photos supplied by Pembroke Dock Heritage Trust



History

Pembroke Dock has had a long association with large scale maritime construction and fabrication, from its establishment as a Royal Naval Dockyard to build navy ships in 1814, to a bustling dockyard with sophisticated supply chain businesses and a highly skilled workforce on site today. The Sunderland Hangars have been a part of our historical landscape for many years, housing the Flying Boats that defended our shores in World War Two and even Pembroke Dock's 'worst kept secret' when a famous spaceship was built here in the 1970s.



Facilities

We have the **space and experience** to find you the right solution. Whether your business is related to **fabrication and engineering**, developing in the **marine renewables industry**, requires storage for bulk and breakbulk cargo, or you're planning a heavy lift project, our team are on hand to offer expert solutions for your business.

Our first-class, quayside facilities offer **internal storage solutions** in a range of commercial properties, as well as a selection of **external laydown space in close proximity to the water**.



Laydown areas & slipway

We have recently extended our **flat, open laydown and fabrication spaces**, and enlarged our slipway to provide more **flexibility in transferring large structures from land to sea**, as part of the **Pembroke Dock Marine development**.



Industrial properties

We offer a **variety of industrial units**, from **small workshops and storage units** up to **heavy industrial units** which can be used for large-scale fabrication or warehousing.

Our properties have a range of access options and we have **plant machinery onsite** to help with transportation from the quayside to the appropriate space. We also work closely with specialist operators when additional kit is needed to help with heavy lift projects.

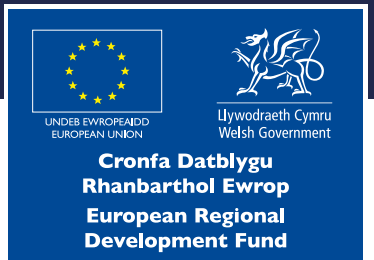
What is Pembroke Dock Marine?

Pembroke Dock Marine is a collaboration between the Port of Milford Haven, ORE Catapult, Marine Energy Wales and Celtic Sea Power. It will build upon the region's existing facilities, services and spaces to establish a world-class centre for marine energy and engineering, located here at Pembroke Port. This £60m development is funded by the Swansea Bay City Deal, European Regional Development Fund through the Welsh Government and through private investment.

Developments completed in 2024 included: Flat, open laydown and fabrication areas, a larger slipway, new berthing for workboats and renovation of heritage buildings to create office spaces.



Pembroke Dock Marine is a Swansea Bay City Deal development, funded by the UK Government, the Welsh Government and private investment. It is also part-funded by the European Regional Development Fund through the Welsh Government.



A personal service

The people of Pembroke Port are integral to delivering a seamless service to our customers, and a positive impact on the local economy and community.

With such a variety of people involved in operations and business activity, from the Port team, to supply chain businesses located in the former Royal Dockyard area and beyond, our team has an enviable reputation for the level of support and help they provide and the wealth of experience they bring to any task.

We work with you to fully understand your requirements and find the right solution, allowing you to reach your objectives efficiently and manage the associated costs.

To find out more about how Pembroke Port can help with your business needs, please contact **Sharon Adams, Commercial Manager** on **07837 178560**



Here are some of the key team members you'll be working with at Pembroke Port.

Sharon Adams Commercial Manager

Sharon's role is centred on promoting awareness of the Port, creating new opportunities, and providing technical expertise and support to customers, ensuring a smooth and safe service from initial enquiry through to project completion.



David Stubbins Marine Support Officer

David offers extensive marine expertise to support the safe navigation of cargo, heavy lift, and renewable vessels on the Milford Haven Waterway. In collaboration with the marine management team, Pembroke Port and stakeholders, David plays a key role in ensuring that customers maximise the benefits of the Port's facilities, reinforcing our position as a leading hub for maritime operations.



Aaron Hosking Operations Lead

Aaron is the project and heavy lift expert at Pembroke Port, coordinating the team and ensuring that daily operations are carried out safely and efficiently.



We are confident in the quality of our service, and our clients share that confidence. We believe this is because **we place your business at the core of everything we do.**

Subsea services

Pembroke Port offers a comprehensive and modern range of facilities that are ideally suited for subsea, offshore and renewable energy operations.

With specialised facilities, the **Port is a hub for offshore renewables, including wave, tidal, and wind energy projects.** Our **strategic location** offers direct access to marine resources ideal for renewable technology deployment and testing. As part of the Celtic Freeport initiative, Pembroke Port is poised for further growth, enhancing its role as a leading centre for low-carbon and offshore energy development.

Our slipway is a vital part of our infrastructure, providing essential services for vessel maintenance, repair, and launching, whilst also offering maximum flexibility for the launch and recovery of marine energy devices and vessels.

Slipway key features

1

Versatile and accessible

Our slipway is engineered to handle various vessel sizes, making it a versatile solution for both commercial and recreational maritime activities. With easy access to the water, the slipway ensures smooth and efficient launching and recovery operations.

2

Robust construction

Built to withstand the rigours of frequent use, our slipway boasts a robust construction that guarantees durability and reliability. Its design caters to the needs of heavy-duty vessels, ensuring safe and secure handling during maintenance and repair processes.

3

Supporting infrastructure

There is ample space for laydown and storage adjacent to the slipway. This includes areas for temporary storage of vessels and equipment, facilitating seamless operations and minimising downtime.

4

Comprehensive services

A range of ancillary services are available to complement the slipway facility. These include on-site technical support, equipment rental, and access to skilled labour for various maintenance and repair tasks. Our team is dedicated to ensuring that all operations are conducted safely and efficiently.

5

Easy booking process

We offer flexible booking options to accommodate your schedule, whether it's for a one off launch or a long term project.

6

Competitive rates

We offer competitive pricing for the use of our slipway facilities. Rates are available upon request, and our team is happy to assist with any enquiries regarding pricing and availability.

What is the Celtic Freeport?

The **Celtic Freeport** builds on from the Pembroke Dock Marine development and further accelerates Wales to a net zero economy.

Freeport status provides greater resilience and competitive advantage as 'fast and first movers' in the global shift to net zero and stimulate inward investment in modern, green technologies.

The Celtic Freeport is expected to support 16,000 jobs and generate up to £5.5 billion of investment.

You can find out more here at www.celticfreeport.wales

Flexible berths

Our **flexible berths** are capable of accommodating large subsea and offshore vessels, including specialised construction, survey, and support vessels. The Port's water depths and large quay spaces ensure that heavy-lift operations, offshore platform mobilisations, and the loading and unloading of subsea equipment can be carried out with ease. This eliminates logistical challenges and allows companies to bring in and move out large-scale subsea and offshore components efficiently.

Workboat facilities

A new slipway and a pontoon for workboat berthing are now in place at Pembroke Port, as part of the Swansea Bay City Deal-backed Pembroke Dock Marine project.

The new slipway provides maximum flexibility for the launch and recovery of marine energy devices and vessels, while the pontoons have strengthened the Port's operations and maintenance proposition for the offshore industry.

Designed to accommodate a diverse range of vessels, including workboats, crew transfer vessels, service operation vessels, barges and other small crafts, these pontoons represent our commitment to enhancing marine operations in the Celtic Sea and beyond.

Pontoon key features

1

Secure access

Ensuring the safety and security of vessels and crew

2

Utility hook-ups

Equipped with electricity and water connections for convenience

3

Flexible berthing

Available for both short and long-term berthing, providing flexibility for diverse operational requirements



Storage solutions

Pembroke Port has the space and the experience to find you the right solution whether you need storage for bulk and breakbulk cargo, engineering projects and heavy lifts, marine renewables device development and maintenance, or something else.

Internal space

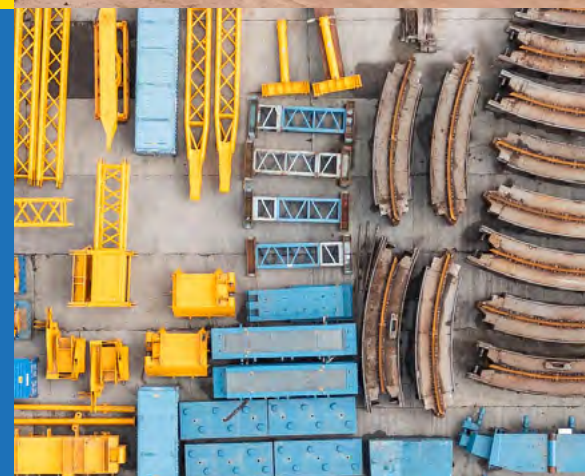
Our buildings have a range of access options and we have plant machinery onsite to help with transportation from quayside to the appropriate space. We also work closely with specialist operators when additional kit is needed to help with heavy lift projects.

External space

We have premium quay space available as well as laydown areas throughout Pembroke Port.

Laydown space

Renewable devices and supporting industries all need one thing: space. So, we've created extra laydown space by infilling the timber pond, and completely transformed the area to the south of our footprint to provide extensive and flexible outdoor laydown space. As part of the Swansea Bay City Deal-backed Pembroke Dock Marine project, we have created a 17,000sqm flat and open laydown area.



Our facilities are **protected by CCTV surveillance and on-site security personnel**, ensuring that all items are kept safe and secure around the clock.

Cargo services

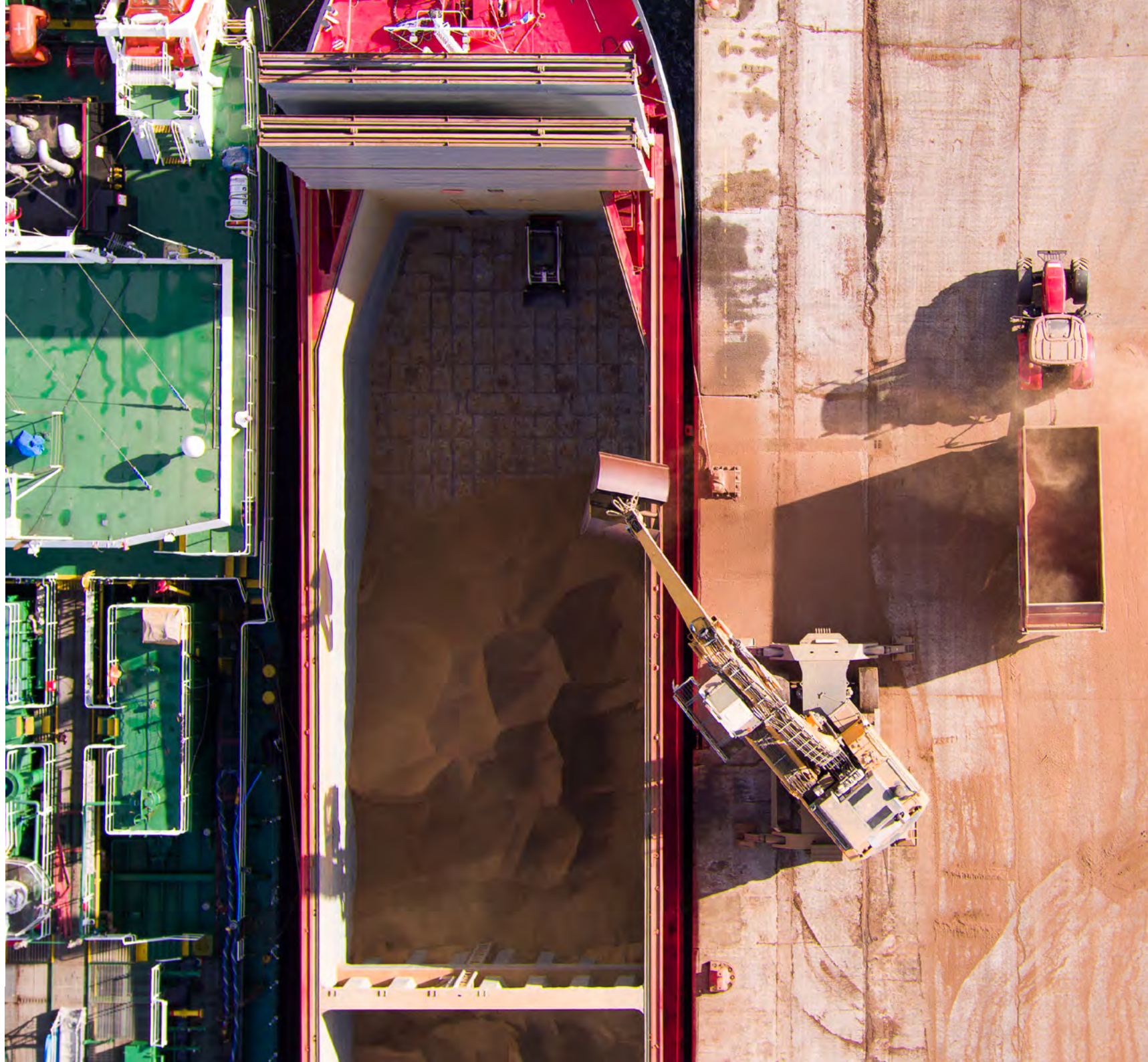
Pembroke Port provides bulk and breakbulk cargo solutions from loose, dry bulk cargoes such as animal feed and aggregates to unitised, breakbulk goods such as bales and timber, as well as containerised goods and liquid cargo. We can offer an efficient transportation hub for your cargo needs.

With a range of laydown and storage options, Pembroke Port offers flexibility. We can accommodate straight to quay transfer or offer short, mid and long term storage solutions complemented by an experienced, efficient quayside transfer service co-ordinated to meet your onward shipping demands.

We handle your cargo efficiently and safely so that it reaches your destination as expected - and our prices are competitive.

We'll help to source and deliver the dockside requirements that best suit your needs – from forklift trucks and loading shovels to large heavy lift cranes. The team are friendly and helpful with a professional and dedicated approach to dockside logistics.

From bulky project cargo arriving over the quay for engineering projects on site, to outward shipment of supersize energy industry equipment, we offer heavy lift solutions without heavyweight pricing.



Key features

1 24/7 secure access

5 West UK coast base

2 Experienced stevedoring

6 Bunkering (afloat or on-quay)

3 High-skill engineering and marine supply chain

7 Explosives licence

4 Emergency and planned layover and supplies services

8 SNAP parking

Commercial properties

Whether you are an established business looking to relocate or expand, have a specific project requirement, or are a start-up, the Port of Milford Haven has a range of commercial property solutions to find the perfect base for your business.

Our properties include **light industrial units, small workshops and storage units from 300 sqft, heavy industrial units up to 30,000 sqft** which could be used for large-scale fabrication or warehousing, and **office space in historic dockyard buildings ranging from 140 sqft with shared facilities to 3,700 sqft self-contained properties**, with newly refurbished offices available too.

The properties benefit from the nearby shops, cafés and hotels in the town of Pembroke Dock, the twice daily ferry service to Ireland with Irish Ferries, nearby slipway and quay access, port services and infrastructure, and the local supply chain including specialist engineering businesses. Plus, the location is within the Government supported Haven Waterway Enterprise Zone and the Celtic Freeport.

For full details on available properties in Pembroke Port, visit: www.mhpa.co.uk/our-services/commercial-property



Heavy industry:

Our industrial units scale up to 30,000 sqft and we have additional laydown and storage areas throughout the site. Many offer significant overhead clearance for gantry crane operation.

Supply chain

Pembroke Port lies at the heart of the UK’s leading energy port, with an experienced supply chain which has expanded alongside Pembrokeshire’s energy industry.

An established supply chain exists around the Port offering services including **ship chandlery, owners items/ husbandry suppliers, technical and specialist suppliers** and **local branches of world-leading shipping agents**.

Specialisms cover **engineering and construction, shipping and haulage, lifting and cranes, specialist consultancy** and **onwards support**.

It is a vibrant area which delivers immediate benefits to our clients. Delays are minimised and less time and money is wasted mobilising supply chain companies to site leaving you to focus your energy on delivering your business goals.



Pembroke Port also acts as a supply port

Pembroke Port also acts as a supply port for industries working offshore. Its proximity to the Irish Sea and Bristol Channel shipping lanes and a doorstep high-skill engineering and marine supply chain also make it a convenient vessel layover site accommodating planned and emergency stays as needed.

Supply chain services

Services offered on the doorstep by our supply chain include:

- | | |
|---|---------------------|
| 1 Marine, electrical and mechanical engineering | 5 Hauliers |
| 2 Ship building and repairs | 6 Divers |
| 3 Lifting and crane hire | 7 Wide load escorts |
| 4 Tugs, barges, workboats | |

Pembroke Port Site Map

GATE 1

QUAY SPECIFICATIONS			
	Quay Length (m)	Max Vessel Length (m)	Control Depth (m)
1 Quay 1	180m	168m	6.9/6.4/4.4* Approach - 4.6m
2 Quay 2	100m	96m	5.0m Approach - 4.1m

*Depends on berth box

AREA SPECIFICATIONS	
	Area m ²
3 Cargo Shed	1,944m ²
4 Eastern Hangar	2,744m ²
5 Western Hangar	2,744m ²
6 Zone D	1,898m ²
7 Zone E	9,088m ²
8 Zone F	4,935m ²

GATE 2 & 3

BERTH SPECIFICATIONS			
	Length (m)	Max Vessel Length (m)	Control Depth (m)
9 Ferry Terminal	190m	185m	7.5m
10 Ro-Ro Berth	11.5m	184m	1.2m

AREA SPECIFICATIONS	
	Area m ²
11 Pillar Warehouse	3,051m ²

GATE 4

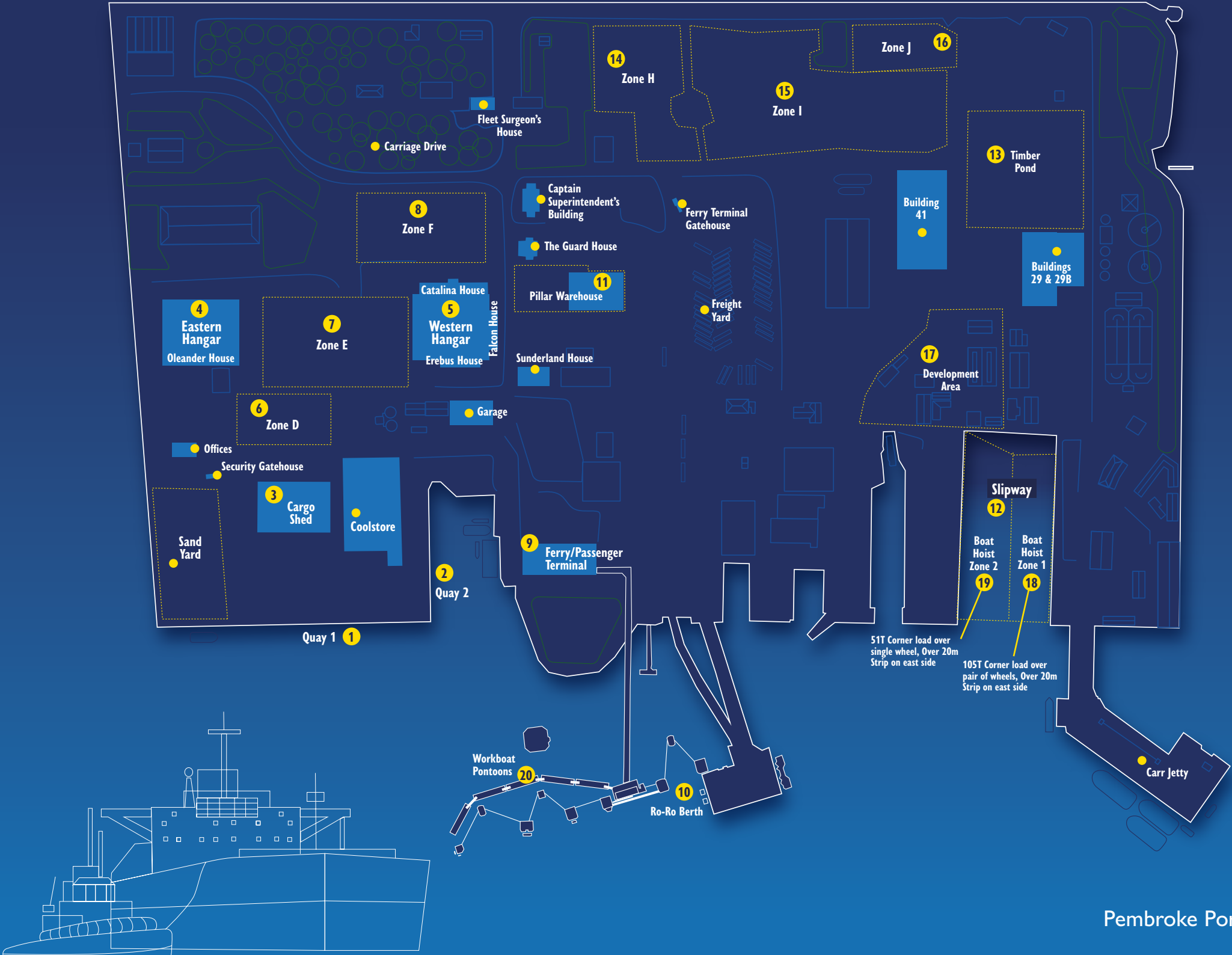
SLIPWAY SPECIFICATIONS		
	Length of Face (m)	Control Depth (m)
12 Slipway	66.5m	-3.3m Approach - 1.0m

WORKBOAT PONTOON SPECIFICATIONS	
	Control Depth (m)
Berth A	3.3 Approach 1.6
Berth B	3.3 Approach 1.6
Berth C	3.8 Approach 1.6
Berth D	3.8 Approach 1.6
Berth E	5.5 Approach 4.6

Each workboat pontoon is 25m and has access to fresh water and electricity

LOADING SPECIFICATIONS		
15 16 Lot 2 Concrete Area (excluding parking area)	20kPa	2 tonnes/m ²
14 Lot 2 Unbound Area	40kPa	4 tonnes/m ²
13 Timber Pond	40kPa	2.55 tonnes/m ²
12 Slipway	25kN/m2	2.55 tonnes/m ²

AREA SPECIFICATIONS	
	Area m ²
14 Zone H	5,304m ²
15 Zone I	14,012m ²
16 Zone J	3,354m ²
13 Timber Pond	8,556m ²
17 Development Area	7,757m ²
18 Boat Hoist Zone 1	2,702m ²
19 Boat Hoist Zone 2	5,786m ²

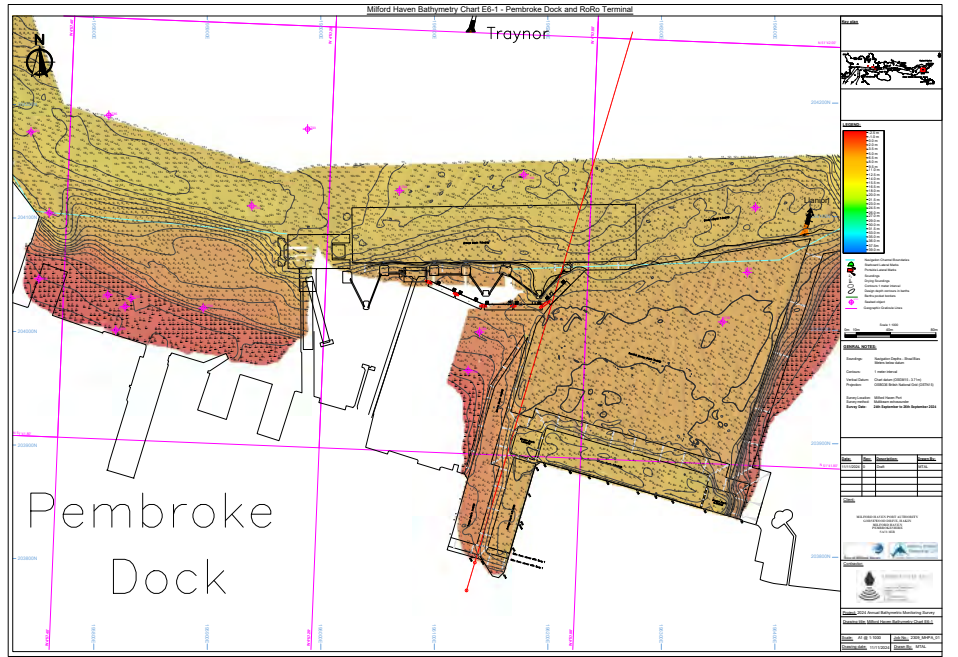


Pembroke Port guidelines

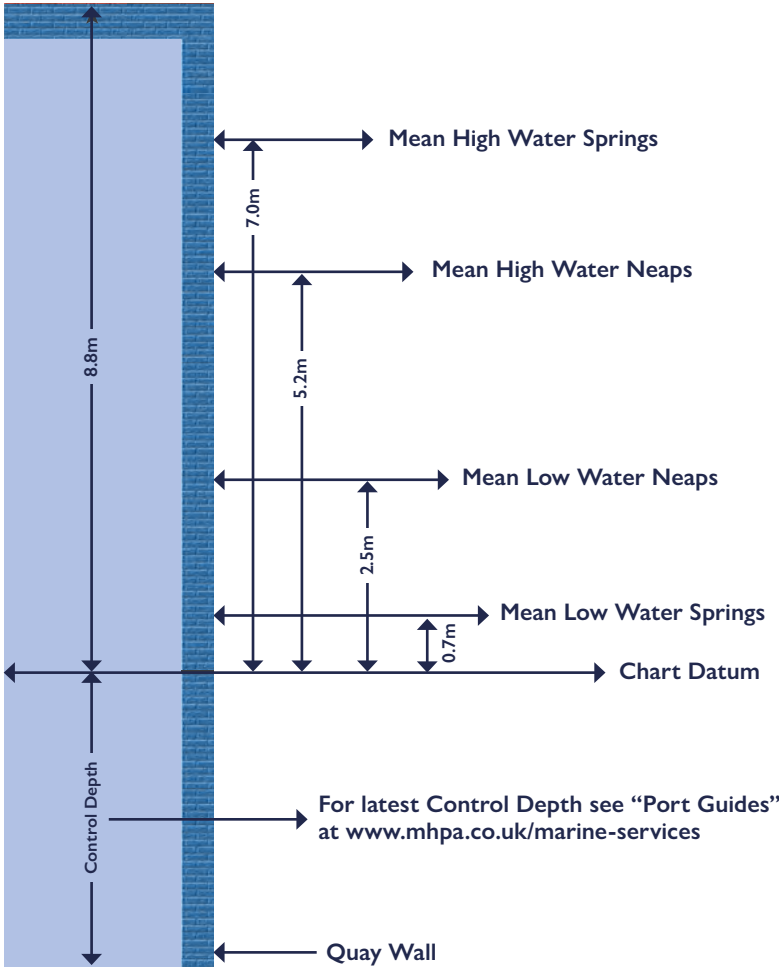
Instructions to agents of all vessels entering Pembroke Port

The following procedures need to be followed to ensure compliance with the Port of Milford Haven's Marine Department requirements so that vessels can access the berths at Pembroke Port.

- **The point of contact is VTS at all times.** Please do not call the Port of Milford Haven or other offices directly as this may result in duplication and possible delays.
- **Please insert all vessels into the iMAP database online.** New customers can access a password by contacting VTS.
- **VTS can be contacted on: VHF Ch.12**
- **Vessels must have appropriate charts, Admiralty 3274 and 3275 as minimum, or entry may be refused.** A passage plan must be completed and vessels must report any defects in navigation equipment or machinery, hull etc to VTS as soon as possible.
- **The Pilot Station is 5 miles SW of St Anne's Head. Vessel arrival ETA at Pilot Station needs to be given 24 hours in advance.** When the vessel is in radio contact with VTS the Pilot is then arranged.
- **There is a possibility that movements may be restricted at ferry times.** Vessels must advise VTS of their arrival and departure draft as soon as they are able to due to possible restrictions on entry and at berth.
- **Tug assistance is as per Pilot/Master requirements.**
- **The control depth at Quay 1 and 2 are defined within the 'Jetty Information' tables in the latest version of the Port of Milford Haven's 'Port Guidelines': www.mhpa.co.uk/marine-services**



QUAY HEIGHT AND TIDAL RANGES



Please get in touch to request copies of technical details.

Local area information

Lapped by sea on three sides, Pembrokeshire is a haven for a range of water sports, scenic coastal walks and fresh, locally landed seafood.

An area of outstanding natural beauty, protected by the Pembrokeshire Coast National park, Britain's only coastal National Park which covers 612 square kilometres from St Dogmaels in the north of the county, to Amroth in the south of the county, as well as the magnificent Preseli hills, the Daugleddau Estuary and the smallest city in Britain; St Davids.

Pembroke Dock is a town with a short but notorious past. The area was just farmland at the end of the eighteenth century but by 1901 the town had 11,000 residents. It originally developed around the Royal Naval Dockyard and produced 260 fine ships between 1814-1926, including several royal yachts and men-of-war.

Places to stay

Pembroke Dock offers a range of accommodation options to suit every visitor, from charming bed and breakfasts to family-friendly hotels and self-catering stays.

The Shipwright Inn is adjacent to Pembroke Port Gate 1 and is a family-run business offering en-suite rooms with access to a shared kitchen and a popular pub and restaurant located below.

The Dolphin Hotel & Restaurant is a family-run business with a range of room options and a restaurant serving breakfast, lunch and evening meals.

There is also a **Travelodge** close by with everything you need for a comfortable night's sleep.

Just over the waterway, in Milford Haven, **Tŷ Milford Waterfront** is a 100 bedroom hotel with award-winning restaurant and corporate rates available for business customers.

Bluestone is nestled in 500-acres of rolling countryside, featuring luxury lodges and cottages where the entire family can relax and feel at home.

Places to eat

Whether you're after a **hearty breakfast**, an authentic **Indian meal**, a succulent **steak**, **fresh seafood** or just a sandwich to eat on the go, the town of **Pembroke Dock offers a wide variety of cafés and restaurants** for you to enjoy.

Things to do

Find out about the history of the area, explore historic castles or play a round of golf, these are just some of the attractions in the area.

Pembroke Dock Heritage Centre is located in the beautiful Garrison Chapel and demonstrates the towns link with the Sunderland flying boats. Designed by naval architect, George Ledwell Taylor, the Grade II listed Garrison Chapel is believed to be the only surviving classical Georgian Church in Wales. It was built by the Admiralty in 1830 as a place of worship for its employees in the dockyard. Visitors can also view the Millennium Falcon exhibition, a celebration of the building of the iconic Star Wars starship in the town in 1979.

The West Wales Maritime Heritage Society is a fascinating museum and library bursting with maritime artefacts where visitors can see how villages relied on small boats, how coal and fishing industries used boats, and a range of old tools and engines.

Pembroke Castle is a 900 year old medieval castle with an interesting past. Visitors can explore the castle grounds and exhibits, enjoy a guided tour or have a bite to eat in the on-site café, The Castle Kitchen.

South Pembrokeshire Golf Club is an 18 hole golf course with picturesque views of the River Cleddau.

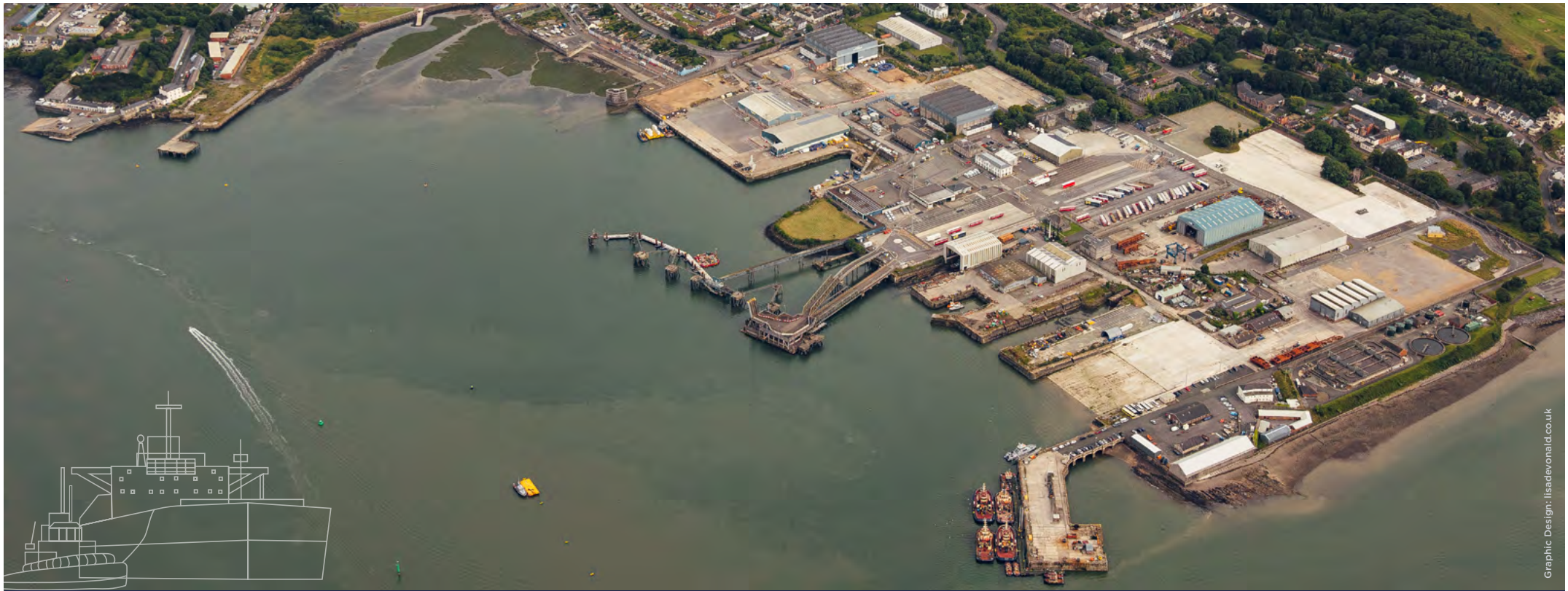
Transport

Pembroke Dock is connected by several bus services linking to Haverfordwest, Milford Haven and Tenby. There is a railway station in Pembroke Dock, and Irish Ferries operate a ferry service to Rosslare in southern Ireland twice a day in the early afternoon and the early hours of the morning.



Photo supplied by Pembroke Dock Heritage Trust



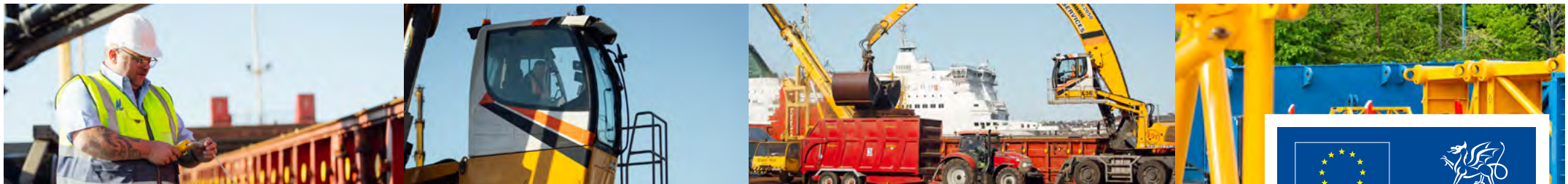


Graphic Design: lisadevonald.co.uk

For more details and to find out how we can help your business, please get in touch with:
Sharon Adams | Commercial Manager | 01646 696631 | sharon.adams@mhpa.co.uk
 Pembroke Port, The Dockyard, Pembroke Dock, Pembrokeshire SA72 6TD



#quaywatch



Pembroke Port is owned and operated by the Port of Milford Haven



Pembroke Dock Marine is a Swansea Bay City Deal development, funded by the UK Government, the Welsh Government and private investment. It is also part-funded by the European Regional Development Fund through the Welsh Government.

