



**Pembroke
Port**

Connecting industry in the Celtic Sea



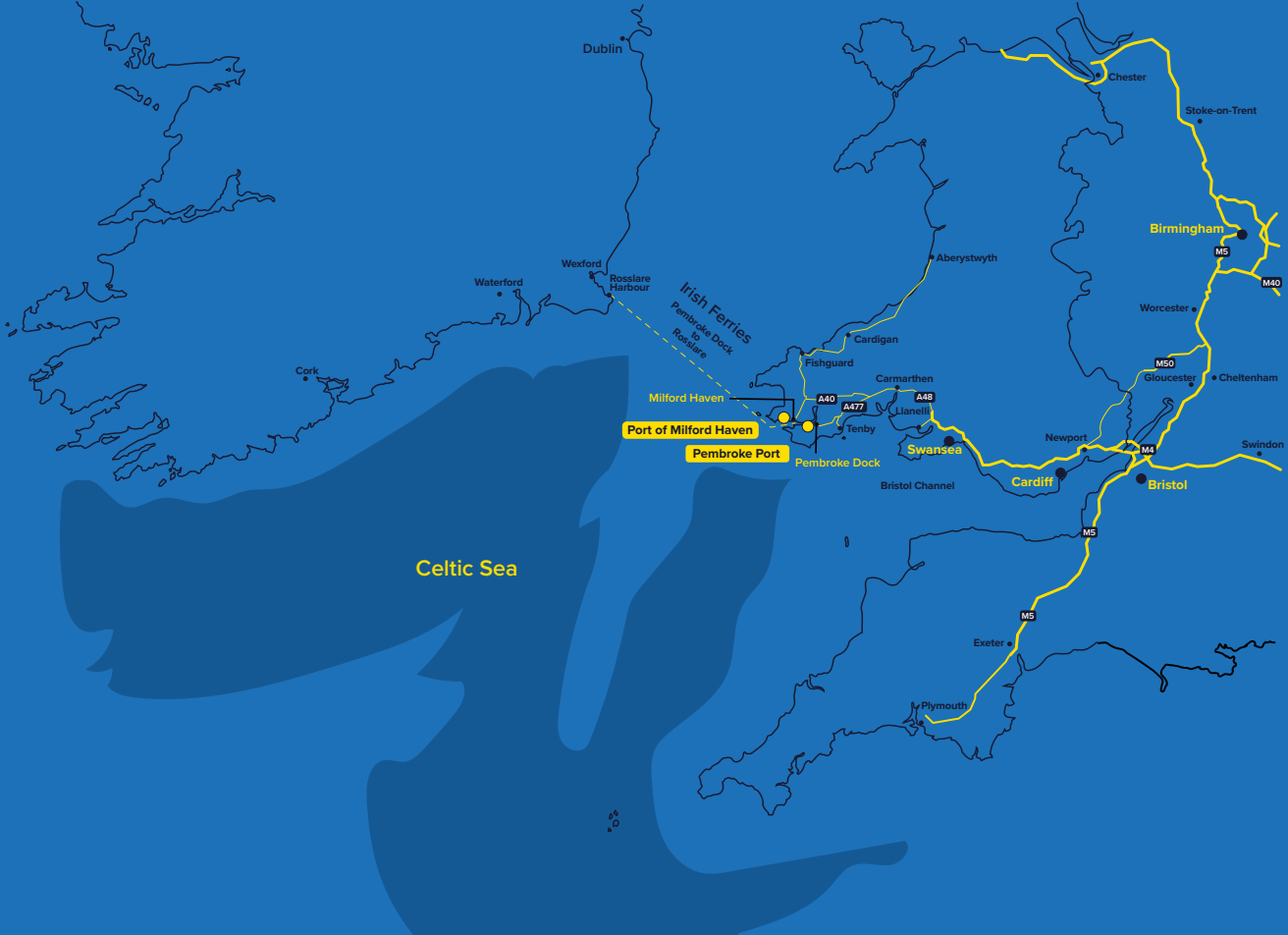
Part of the Port of Milford Haven

Welcome to Pembroke Port

Pembroke Port is a 69 acre port on the west coast of the UK, perfectly located on the sheltered waters of the Milford Haven Waterway, near the Celtic Sea and the Bristol Channel.

Operating on a 24 hour basis, the Port provides multiple quayside services to the marine, engineering and renewables sector and has an established reputation in cargo handling, heavy lifts, and both passenger and freight ferry operations.

Pembroke Port is owned and operated by the Port of Milford Haven, the UK's leading energy port. It is a Trust Port, and is responsible for pilotage and conservancy on the Milford Haven Waterway.



Facilities

We have the **space and experience** to find you the right solution. Whether your business is related to **fabrication and engineering**, developing in the **marine renewables industry**, requires storage for bulk and breakbulk cargo, or you're planning a heavy lift project, our team are on hand to offer expert solutions for your business.

Our first-class, quayside facilities offer **internal storage solutions** in a range of commercial properties, as well as a selection of **external laydown space in close proximity to the water**.



Laydown areas & slipway

We have recently extended our **flat, open laydown and fabrication spaces**, and enlarged our slipway to provide more **flexibility in transferring large structures from land to sea**, as part of the *Pembroke Dock Marine development*.



Supply Chain

We have a **range of world class experts in a variety of fields** on site. Specialisms cover **engineering and construction, shipping and haulage, lifting and cranes, specialist consultancy and onwards support**.

Commercial Properties

We have a **variety of industrial units**, from **small workshops and storage units** up to **heavy industrial units** which can be used for large-scale fabrication or warehousing.

We have a range of offices and storage on site, all in close proximity to our robust quay and laydown. Our expert property team can work with you to find the right solution for your business, including long and short term options.



What is Pembroke Dock Marine?

Pembroke Dock Marine is a £60m collaboration between the Port of Milford Haven, ORE Catapult, Marine Energy Wales and Celtic Sea Power. It has built upon the region's existing facilities, services and spaces to establish a world-class centre for marine energy and engineering, located here at Pembroke Port.

Developments completed in 2024 included: Flat, open laydown and fabrication areas, a larger slipway, new berthing for workboats and renovation of heritage buildings to create office spaces.



Pembroke Dock Marine is a Swansea Bay City Deal development, funded by the UK Government, the Welsh Government and private investment. It is also part-funded by the European Regional Development Fund through the Welsh Government.



Cronfa Datblygu Rhanbarthol Ewrop European Regional Development Fund

The Celtic Freeport: Accelerating Wales' green economy

The Celtic Freeport builds on from the Pembroke Dock Marine development and further accelerates Wales to a net zero economy. It is a private-public sector partnership led by Associated British Ports, Neath Port Talbot Council, Pembrokeshire County Council and the Port of Milford Haven. As a region, it includes renewables developers, energy companies, industrial complexes, innovation assets, academic institutions and education providers. It will provide the backbone for a cleaner future based on floating offshore wind, the hydrogen economy, sustainable fuels, carbon capture and storage, cleaner steel and low-carbon logistics.

Pembroke Port is a springboard for the offshore wind technology supply chain, providing valuable opportunities to participate within the local low-carbon industrial ecosystem with innovation in green technology at its heart.

Freeport status provides greater resilience and competitive advantage as 'fast and first movers' in the global shift to net zero and stimulate inward investment in modern, green technologies.

The Celtic Freeport is expected to support 11,500 jobs and generate up to £8.4 billion of investment.

You can find out more at www.celticfreeport.wales



As part of the Celtic Freeport, locating your business at Pembroke Port has many advantages that aren't commonly available, including:

- The ability to negotiate business tax breaks with HMRC, including increased allowances on assets you purchase, and relief on employer's NIC for the people you employ.
- Providing a significant competitive advantage, given these tax breaks are subject to the location, aren't commonly available, and can be available for substantial periods of time, often over several years.
- It may enable you to negotiate business rates exemptions with Pembrokeshire County Council.

Businesses locating at Pembroke Port would also:

- Be in a strong position for direct Welsh Government or local authority grants when such schemes are announced, particularly if you're innovating a new product or designing a new process in a carbon friendly way.
- Benefit from increased investment in surrounding infrastructure, particularly in decarbonisation and port structure.
- Add valuable credibility to your own Environmental, Social and Governance/Corporate Sustainability credentials by contributing directly to the UK's net-zero targets, encouraging green infrastructure investment, creating jobs and developing skills.

To discuss locating your business at Pembroke Port, please contact Sharon Adams, Commercial Manager on 01646 696631.



A personal service

The people of Pembroke Port are integral to delivering a seamless service to our customers, and a positive impact on the local economy and community.

With such a variety of people involved in operations and business activity, from the Port team, to supply chain businesses located on site and beyond, our team has an enviable reputation for the level of support and help they provide and the wealth of experience they bring to any task.

We work with you to fully understand your requirements and find the right solution, allowing you to reach your objectives efficiently and manage the associated costs.



To find out more about how Pembroke Port can help with your business needs, please contact **Sharon Adams, Commercial Manager** on **01646 696631**

Here are some of the key team members you'll be working with at Pembroke Port.

Sharon Adams Commercial Manager

Sharon's role is centred on promoting awareness of the Port, creating new opportunities, and providing technical expertise and support to customers, ensuring a smooth and safe service from initial enquiry through to project completion.



Ellie Kokolin Commercial Assistant

Ellie is responsible for handling customer enquiries, preparing detailed estimates and invoices, and ensuring that both new and existing customers receive a consistently high standard of service throughout their interactions with the Port.



Tam Bardell Head of Business Development & Sustainability

Tam is responsible for growing Pembroke Port's commercial revenues through strategic business development, capitalising on existing capabilities and infrastructure, and delivering new services and investment-led infrastructure projects that strengthen the Port's future competitiveness.



We are confident in the quality of our service, and our clients share that confidence. We believe this is because **we place your business at the core of everything we do.**

Supported by our team of expert operatives:

Chris Oliver

Quayside Operations Manager

Chris is responsible for all the operational activity that takes place at Pembroke Port and Pembroke Dock Ferry Terminal and ensures that all services are carried out safely and professionally.



Aaron Hosking

Operations Lead

Aaron is the project and heavy lift expert at Pembroke Port, coordinating the team and ensuring that daily operations are carried out safely and efficiently.



Paul Paddick

Port Supervisor

Paul supervises the daily operations, stevedores and general operatives at Pembroke Port, ensuring that the site is running well and that customers and tenants have everything they need.



Subsea services

Pembroke Port offers a comprehensive and modern range of facilities that are ideally suited for subsea, offshore and renewable energy operations.

With **specialised facilities**, and our **strategy location**, we offer **direct access to marine resources ideal for renewable technology deployment and testing**. As part of the Celtic Freeport initiative, Pembroke Port is poised for further growth, enhancing its role as a leading centre for low-carbon and offshore energy development.

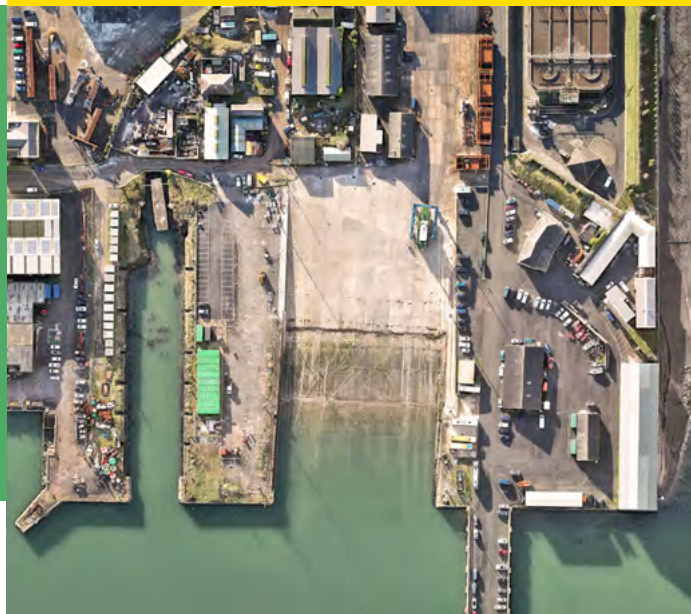
Extended Slipway

Our slipway is a vital part of our infrastructure, providing essential services for vessel maintenance, repair, and launching, whilst also offering maximum flexibility for the launch and recovery of marine energy devices and vessels.



Flexible berths

Our **flexible berths** are capable of accommodating large subsea and offshore vessels, including specialised construction, survey, and support vessels. The Port's water depths and large quay spaces ensure that heavy-lift operations, offshore platform mobilisations, and the loading and unloading of subsea equipment can be carried out with ease. This eliminates logistical challenges and allows companies to bring in and move out large-scale subsea and offshore components efficiently.



Pontoon key features

- 1 Secure access**
Ensuring the safety and security of vessels and crew
- 2 Utility hook-ups**
Equipped with electricity and water connections for convenience
- 3 Flexible berthing**
Available for both short and long-term berthing, providing flexibility for diverse operational requirements

Workboat facilities

A new slipway and a pontoon for workboat berthing are now in place at Pembroke Port, as part of the Swansea Bay City Deal-backed Pembroke Dock Marine project.

The new pontoons have strengthened the Port's operations and maintenance proposition for the offshore industry.

Designed to accommodate a diverse range of vessels, including workboats, crew transfer vessels, service operation vessels, barges and other small crafts, these pontoons represent our commitment to enhancing marine operations in the Celtic Sea and beyond.



Storage solutions

Pembroke Port has the space and the experience to find you the right solution whether you need storage for bulk and breakbulk cargo, engineering projects and heavy lifts, marine renewables device development and maintenance.

Internal space

Our buildings have a range of access options and we have plant machinery onsite to help with transportation from quayside to the appropriate space. We also work closely with specialist operators when additional kit is needed to help with heavy lift projects.

External space

We have premium quay space available as well as laydown areas throughout Pembroke Port.

Laydown space

Renewable devices and supporting industries all need one thing; space. So, we've created extra laydown space by infilling the timber pond, and completely transformed the area to the south of our footprint to provide extensive and flexible outdoor laydown space. As part of the Swansea Bay City Deal-backed Pembroke Dock Marine project, we have created a 17,000sqm flat and open laydown area.





Security

Our facilities are **protected by CCTV surveillance and on-site security personnel**, ensuring that all items are kept safe and secure around the clock.



Cargo services

Pembroke Port provides bulk and breakbulk cargo solutions from loose, dry bulk cargoes such as animal feed and aggregates to unitised, breakbulk goods such as bales and timber, as well as containerised goods and liquid cargo. We can offer an efficient transportation hub for your cargo needs.

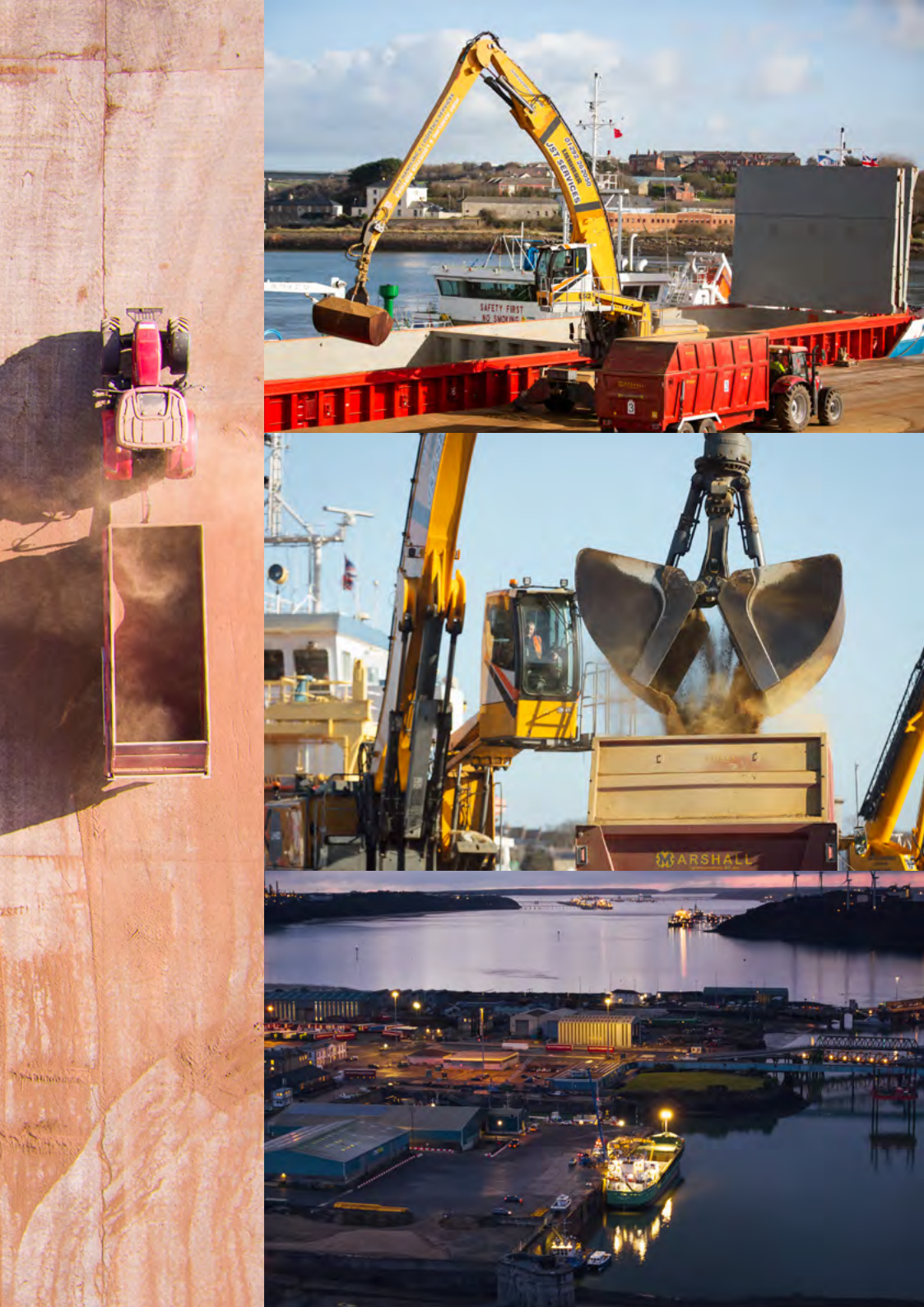
With a range of laydown and storage options, Pembroke Port offers flexibility. We can accommodate straight to quay transfer or offer short, mid and long term storage solutions complemented by an experienced, efficient quayside transfer service co-ordinated to meet your onward shipping demands.

We handle your cargo efficiently and safely so that it reaches your destination as expected - and our prices are competitive.

We'll help to source and deliver the dockside requirements that best suit your needs – from forklift trucks and loading shovels to large heavy lift cranes. The team are friendly and helpful with a professional and dedicated approach to dockside logistics.

From bulky project cargo arriving over the quay for engineering projects on site, to outward shipment of supersize energy industry equipment, we offer heavy lift solutions without heavyweight pricing.





Key features

1

24/7
secure access

5

West UK
coast base

2

Experienced
stevedoring

6

Bunkering
(afloat or
on-quay)

3

High-skill
engineering and
marine supply
chain

7

Explosives
licence

4

Emergency and
planned layover
and supplies
services

8

SNAP parking

Commercial properties

Whether you are an established business looking to relocate or expand, have a specific project requirement, or are a start-up, the Port of Milford Haven has a range of commercial property solutions to find the perfect base for your business.

Our properties include **light industrial units, small workshops and storage units from 300 sqft, heavy industrial units up to 30,000 sqft** which could be used for large-scale fabrication or warehousing, and **office space in historic dockyard buildings ranging from 140 sqft with shared facilities to 3,700 sqft self-contained properties**, with newly refurbished offices available too.

The properties benefit from the nearby shops, cafés and hotels in the town of Pembroke Dock, the twice daily ferry service to Ireland with Irish Ferries, nearby slipway and quay access, port services and infrastructure, and the local supply chain including specialist engineering businesses. Plus, the location is within the Government supported Haven Waterway Enterprise Zone and the Celtic Freeport.

For full details on available properties in Pembroke Port, visit: www.mhpa.co.uk/our-services/commercial-property





Heavy industry:

Our industrial units scale up to 30,000 sqft and we have additional laydown and storage areas throughout the site. Many offer significant overhead clearance for gantry crane operation.

Supply chain

Pembroke Port lies at the heart of the UK's leading energy port, with an experienced supply chain which has expanded alongside Pembrokeshire's energy industry.

An established supply chain exists around the Port offering services including **ship chandlery, owners items/ husbandry suppliers, technical and specialist suppliers** and **local branches of world-leading shipping agents**. We maintain well established working relationships with these companies and can facilitate introductions to support you.

Specialisms cover **engineering and construction, shipping and haulage, lifting and cranes, specialist consultancy** and **onwards support**.

It is a vibrant area which delivers immediate benefits to our clients. Delays are minimised and less time and money is wasted mobilising supply chain companies to site leaving you to focus your energy on delivering your business goals.





Pembroke Port also acts as a supply port

Pembroke Port also acts as a supply port for industries working offshore. Its proximity to the Irish Sea and Bristol Channel shipping lanes and a doorstep high-skill engineering and marine supply chain also make it a convenient vessel layover site accommodating planned and emergency stays as needed.

Supply chain services

Services offered on the doorstep by our supply chain include:

- | | |
|--|---|
| 1 Marine, electrical and mechanical engineering | 5 Hauliers |
| 2 Ship building and repairs | 6 Divers |
| 3 Lifting and crane hire | 7 Wide load escorts |
| 4 Tugs, barges, workboats | 8 The only pre-consented marine energy test sites in Wales |

Pembroke Port Site Map

GATE 2 & 3

BERTH SPECIFICATIONS			
	Length (m)	Max Vessel Length (m)	Control Depth (m)
9 Ferry Terminal	190m	185m	7.5m
10 Ro-Ro Berth	11.5m	184m	1.2m

AREA SPECIFICATIONS	
	Area m ²
11 Pillar Warehouse	3,051m ²

GATE 1

QUAY SPECIFICATIONS			
	Quay Length (m)	Max Vessel Length (m)	Control Depth (m)
1 Quay 1	180m	168m	6.9/6.4/4.4* Approach - 4.6m
2 Quay 2	100m	96m	5.0m Approach - 4.1m

*Depends on berth box

AREA SPECIFICATIONS	
	Area m ²
3 Cargo Shed	1,944m ²
4 Eastern Hangar	2,744m ²
5 Western Hangar	2,744m ²
6 Zone D	1,898m ²
7 Zone E	9,088m ²
8 Zone F	4,935m ²

GATE 4

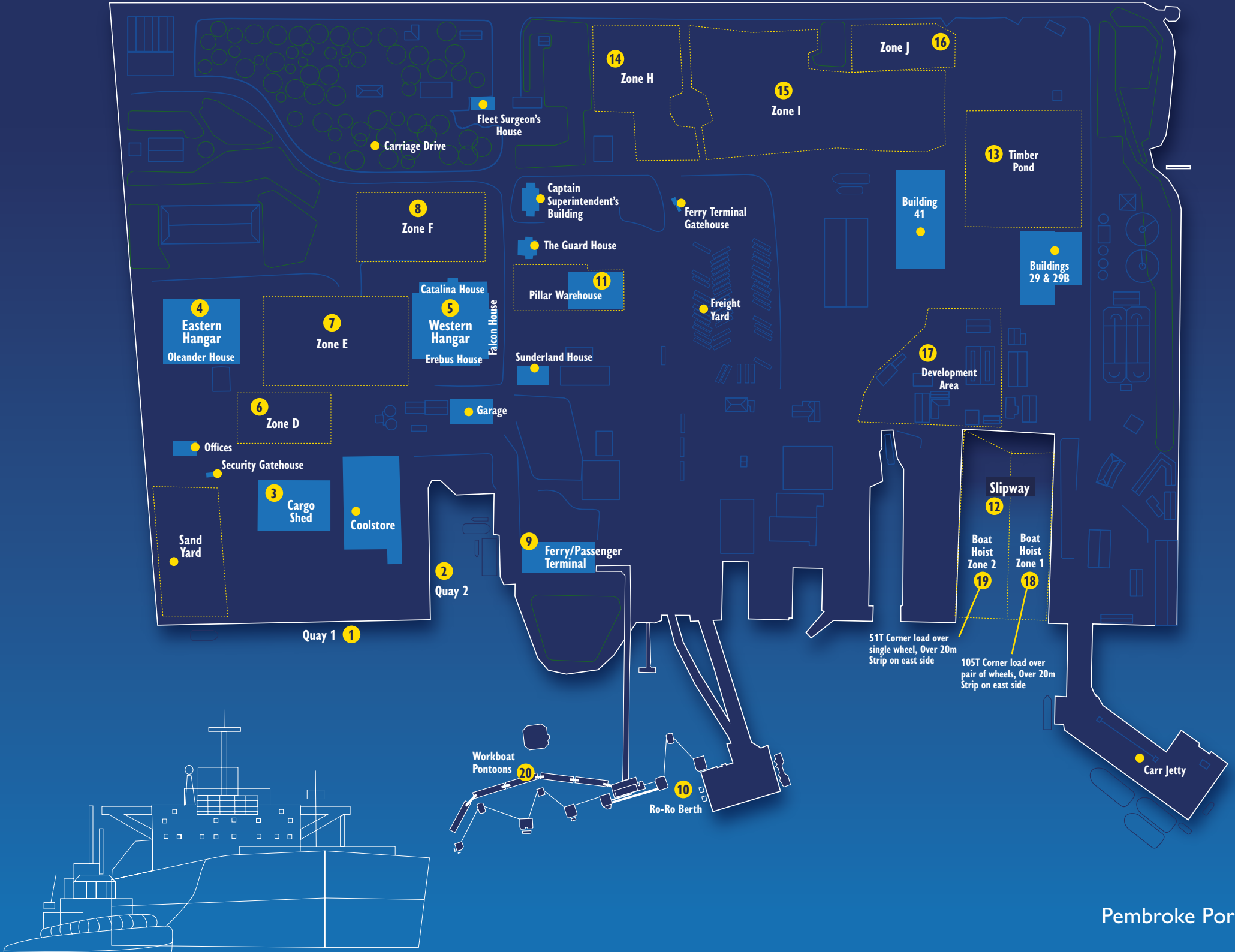
SLIPWAY SPECIFICATIONS		
	Length of Face (m)	Control Depth (m)
12 Slipway	66.5m	-3.3m Approach - 1.0m

WORKBOAT PONTOON SPECIFICATIONS	
	Control Depth (m)
Berth A	3.3 Approach 1.6
Berth B	3.3 Approach 1.6
Berth C	3.8 Approach 1.6
Berth D	3.8 Approach 1.6
Berth E	5.5 Approach 4.6

Each workboat pontoon is 25m and has access to fresh water and electricity

LOADING SPECIFICATIONS	
15 16 Lot 2 Concrete Area (excluding parking area)	20kPa 2 tonnes/m ²
14 Lot 2 Unbound Area	40kPa 4 tonnes/m ²
13 Timber Pond	40kPa 2.55 tonnes/m ²
12 Slipway	2SkN/m2 2.55 tonnes/m ²

AREA SPECIFICATIONS	
	Area m ²
14 Zone H	5,304m ²
15 Zone I	14,012m ²
16 Zone J	3,354m ²
13 Timber Pond	8,556m ²
17 Development Area	7,757m ²
18 Boat Hoist Zone 1	2,702m ²
19 Boat Hoist Zone 2	5,786m ²



Pembroke Port guidelines

Instructions to agents of all vessels entering Pembroke Port

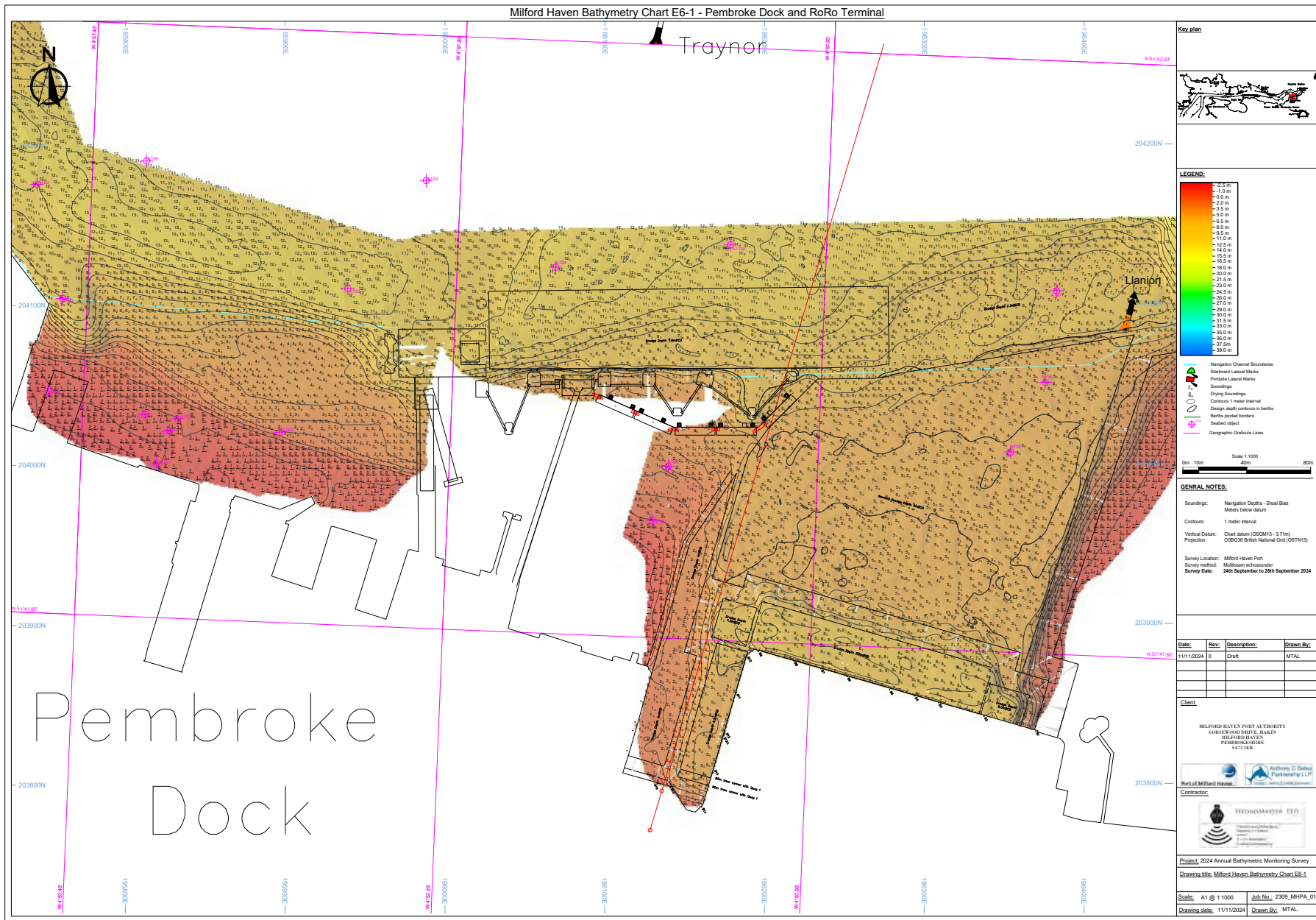
The following procedures need to be followed to ensure compliance with the Port of Milford Haven's Marine Department requirements so that vessels can access the berths at Pembroke Port.

- **The point of contact is VTS at all times.** Please do not call the Port of Milford Haven or other offices directly as this may result in duplication and possible delays.
- **Please insert all vessels into the iMAP database online.** New customers can access a password by contacting VTS.
- **VTS can be contacted on: VHF Ch.12**
- **Vessels must have appropriate charts, Admiralty 3274 and 3275 as minimum, or entry may be refused.** A passage plan must be completed and vessels must report any defects in navigation equipment or machinery, hull etc to VTS as soon as possible.
- **The Pilot Station is 5 miles SW of St Anne's Head. Vessel arrival ETA at Pilot Station needs to be given 24 hours in advance.** When the vessel is in radio contact with VTS the Pilot is then arranged.
- **There is a possibility that movements may be restricted at ferry times.** Vessels must advise VTS of their arrival and departure draft as soon as they are able to due to possible restrictions on entry and at berth.
- **Tug assistance is as per Pilot/Master requirements.**
- **The control depth at Quay 1 and 2 are defined within the 'Jetty Information' tables in the latest version of the Port of Milford Haven's 'Port Guidelines': www.mhpa.co.uk/marine-services**



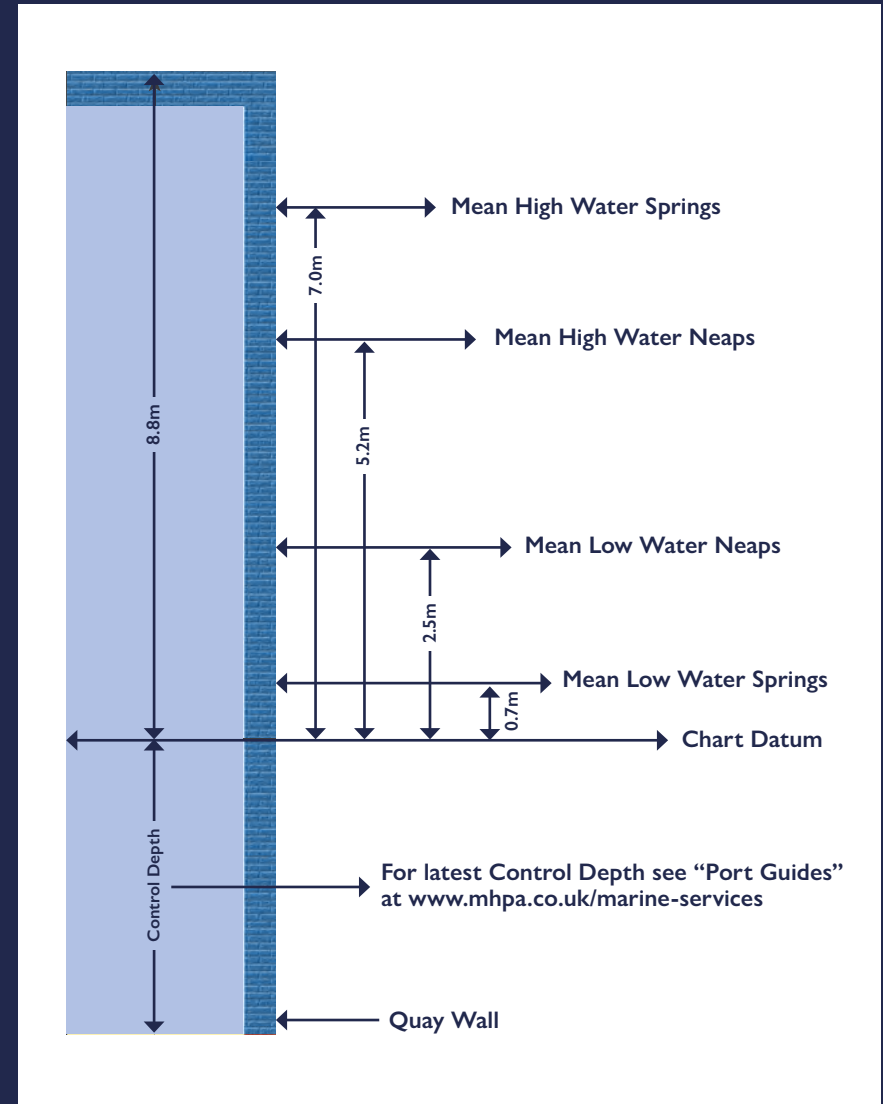


Bathymetry Chart



Pembroke Port Gate 1 Bollards

Quay Height and Tidal Ranges



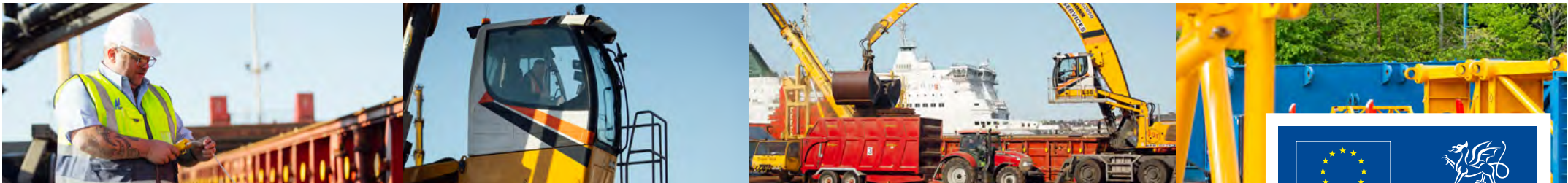


Graphic Design: |lisadevonald.co.uk

For more details and to find out how we can help your business, please get in touch with:
Sharon Adams | Commercial Manager | 01646 696631 | pembrokeport@mpha.co.uk
 Pembroke Port, The Dockyard, Pembroke Dock, Pembrokeshire SA72 6TD



#quaywatch



Pembroke Port is owned and operated by the Port of Milford Haven



Pembroke Dock Marine is a Swansea Bay City Deal development, funded by the UK Government, the Welsh Government and private investment. It is also part-funded by the European Regional Development Fund through the Welsh Government.

**Cronfa Datblygu
 Rhanbarthol Ewrop
 European Regional
 Development Fund**